

Pipe support Type OSS

Construction details:

Cage: built in Fe 360, opened and welded

Roll: built in carbon steel (standard)

Stud: built in stainless steel INOX AISI 303

Buckles: built in bronze auto-lubricating type

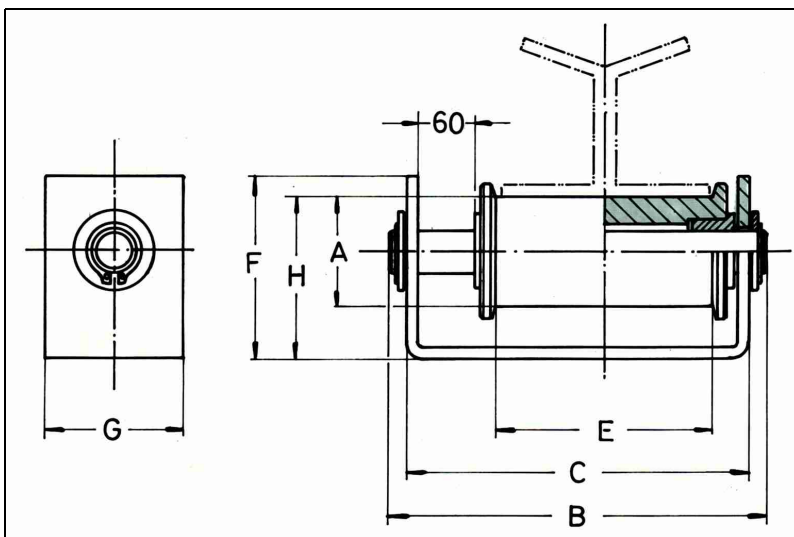
Treatment: zinc plated (white colour)

Applications:

This type of support has on purpose been studied for allowing the support and the longitudinal slide of coated pipelines. In comparison to the type OS, the OSS allows both the longitudinal and lateral slide. It can also be used in pipelines not coated to subsequently reduce the attrition of the pipeline in the zone of contact with the roll. The support has to be installed together with a saddle of support (Type SL) to which the pipeline is placed to avoid direct contact between the roll and the coating. Each roll must be fitted with its correct saddle.

Installation:

The support is connected to the plant through bolts



Type	Saddle type [mm]	Pipe diameter [mm]	Maxload [kg]	A [mm]	B [mm]	C [mm]	E [mm]	F [mm]	G [mm]	H [mm]	I [mm]	L [mm]
OSS 60	GR 1	80	600	21	148	142	64	35	38	30	50	7
OSS 75	GR 2	180	1000	40	168	155	65	105	50	58	71	8
OSS 100	GR 3	300	1500	52	210	195	85	80	65	84	85	10
OSS 120	GR 4	500	2500	68	270	250	145	110	90	104	115	12

Type	F [kg]	T [kg]
OSS 60	600	200
OSS 75	1000	350
OSS 100	1500	500
OSS 120	2500	850

Changes are possible without notice.