

Pipe support Type OMS

Construction details:

Cage: built in Fe 360, opened and welded

Roll: built in carbon steel (standard)

Stud: built in stainless steel INOX AISI 303

Buckles: built in Fe 360 with internal ring of P.T.F.E. auto-lubricating type

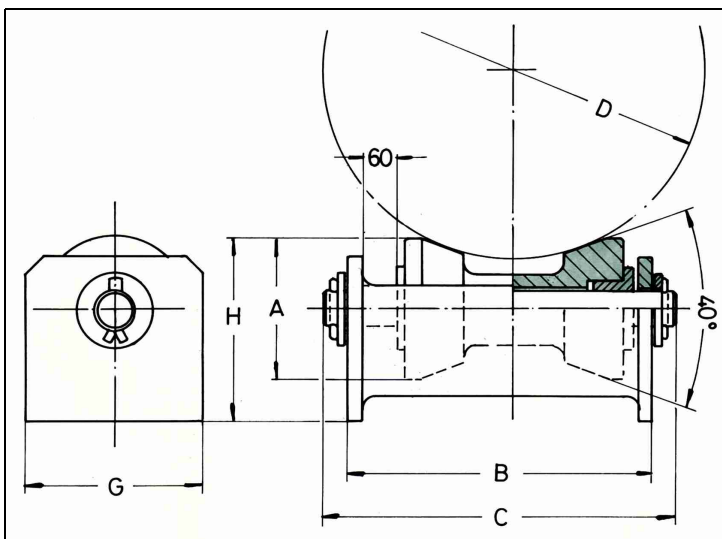
Treatment: zinc plated (white colour)

Applications:

This type of support is used as element of guide and a support for the pipelines. Thanks to the concave form of the roll, it allows a lateral containment of the pipeline. It allows also the longitudinal slide of the pipeline and the lateral slide thanks to the lengthened stud in comparison to the type OD. This support is optimal for piping conducts that are subject to the action of the wind. And it's particularly suitable for withstanding a sideway load of 35% of the vertical load applied by the pipeline.

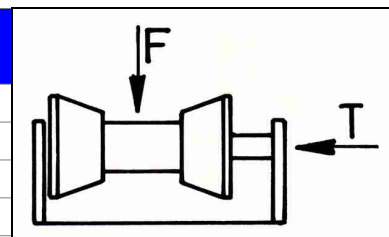
Installation:

The support is connected to the plant through bolts.



Type	D min [mm]	D max [mm]	Maxload [kg]	A [mm]	B [mm]	C [mm]	G [mm]	H [mm]
OMS 100	200	300	2000	95	230	250	130	110
OMS 150	350	500	4000	135	280	310	160	155
OMS 200	500	650	7000	160	340	370	190	185
OMS 250	650	800	13000	180	410	440	210	210

Type	F [kg]	T [kg]
OMS 100	2000	700
OMS 150	4000	1400
OMS 200	7000	2400
OMS 250	13000	4500



Changes are possible without notice.