

Pipe support Type ODS

Construction details:

Cage: built in Fe 360, opened and welded

Roll: built in carbon steel (standard) - Nylon, Teflon (for insulating type)

Stud: built in stainless steel INOX AISI 303

Buckles: built in bronze auto-lubricating type

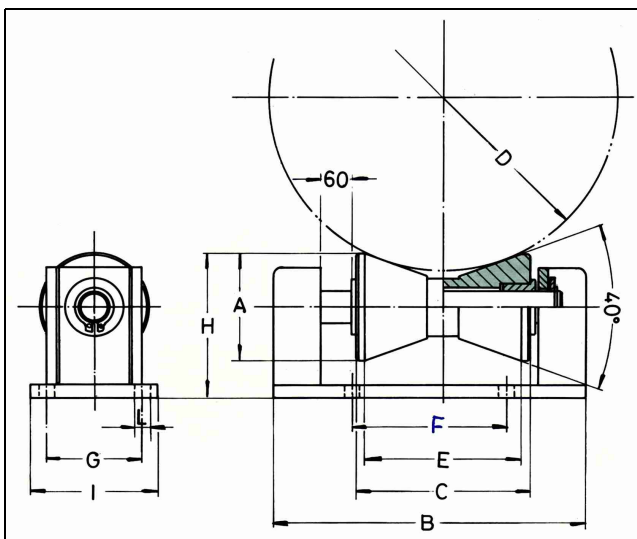
Treatment: zinc plated (white colour)

Applications:

This type of support is used as element of guide and a support for the pipelines. Thanks to the concave form of the roll, it allows a lateral containment of the pipeline. It allows also the longitudinal slide of the pipeline and the lateral slide thanks to the lengthened stud in comparison to the type OD. This support is optimal for piping conducts that are subject to the action of the wind. And it's particularly suitable for withstanding a sideway load of 35% of the vertical load applied by the pipeline.

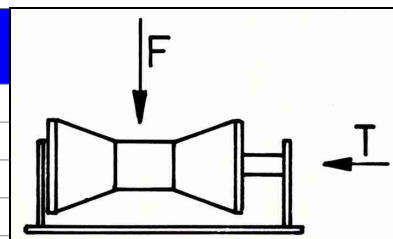
Installation:

The support is connected to the plant through bolts.



Type	D min [mm]	D max [mm]	Maxload [kg]	A [mm]	B [mm]	C [mm]	E [mm]	F [mm]	G [mm]	H [mm]	I [mm]	L [mm]
ODS 50	50	100	500	40	165	55	43	110	45	55	55	7
ODS 100	100	180	1000	48	202	81	75	120	54	62	71	8
ODS 150	150	250	2000	68	240	110	100	140	60	92	80	10
ODS 200	200	350	3200	88	305	145	135	160	75	114	100	12

Type	F [kg]	T [kg]
ODS 50	500	150
ODS 100	1000	350
ODS 150	2000	700
ODS 200	3200	1100



Changes are possible without notice.